



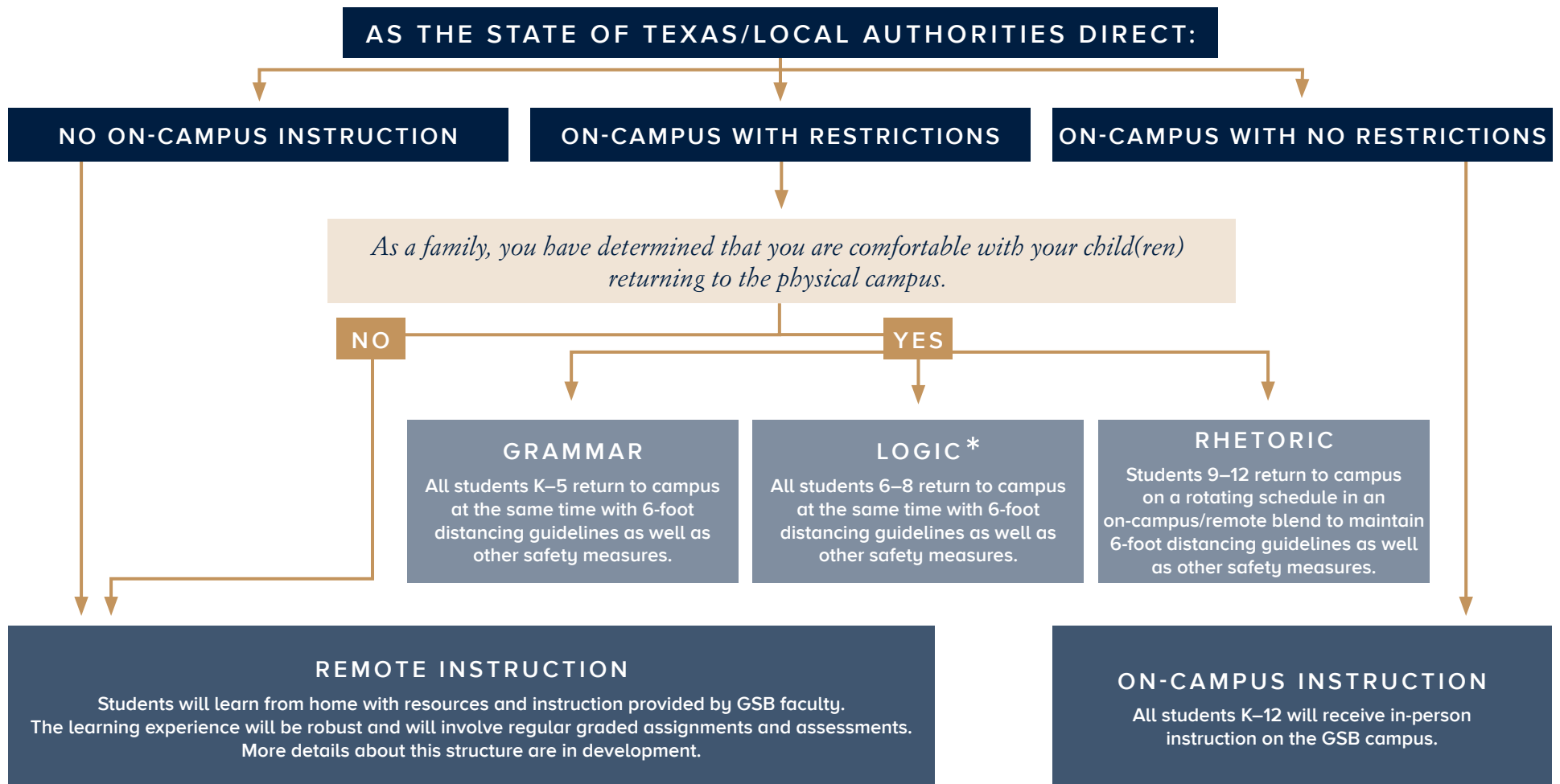
2020–2021 ROADMAP TO REOPENING

GENEVA SCHOOL *of* BOERNE

Geneva School of Boerne has established a Reopening Task Force that is working diligently to develop a reopening strategy that allows flexibility while prioritizing the health and safety of our community. Geneva is currently preparing the physical campus to support students in the fall of 2020 using the guidelines given by the Centers for Disease Control and Prevention, the Texas Education Agency, the Texas Private Schools Association as well as local health authorities. However, the GSB administration recognizes that some families may not be comfortable with their child(ren) returning at that time and we have developed several re-entry options for our families to navigate.

This is the Reopening Plan as of June 26, 2020 and is subject to change based on further instruction from federal, state and local authorities.

In accordance with the recommendations of the Reopening Task Force and using guidelines and requirements outlined by the CDC, TEA, TPSA and local health authorities, Geneva School of Boerne is able to make the physical campus modifications needed to support students' return to campus in the fall of 2020.



In the event that local authorities close schools or initiate a stay-at-home order, all students will transition to Remote Instruction.

** Specific fall distancing guidelines have not been issued; however, this scenario is viable using current guidelines.*